

WELCOME

Brief Introduction to PHD



Partners in Health and Development (PHD)

প্রকল্পের তথ্য	এনজিও এর নাম	কর্মসূচীতে সম্পৃক্ত এনজিওর প্রধান কাজসমূহ(বুলেট পয়েন্ট আকারে)
<p>প্রকল্পের নাম- ইউএসএআইডি-সুখী-জীবন, প্রকল্প, প্রকল্পের মেয়াদ- মে-২০২১ থেকে নভেম্বর- ২০২৩. মৌলভীবাজার অফিস ঠিকানা- প্রকল্প অফিস, সুখী- জীবন প্রকল্প, রিয়াজ প্যালেস, হোল্ডিং-৮৯২, রঘুনন্দনপুর, শ্রীমঙ্গল রোড, মৌলভীবাজার। যোগাযোগ- ফাতেমা শওকত জাহান রোজী- প্রোগ্রাম ফোকাল পারসন ও সিনিয়র উপ-পরিচালক, পার্টনার্স ইন হেলথ এন্ড ডেভেলপমেন্ট (পিএইচডি)। ফোন-০১৮১৬-৫৯৮৩৬৩. ইমেইল- f-jahan@phd-bd.com প্রকল্প সমন্বয়কারী- রেজাউল করিম ভূইয়া সুখী-জীবন প্রকল্প, পার্টনার্স ইন হেলথ এন্ড ডেভেলপমেন্ট (পিএইচডি)। ফোন- ০১৭১৮৬৩৩৫৫২. ইমেইল rezaphd29@gmail.com</p>	<p>পার্টনার্স ইন হেলথ এন্ড ডেভেলপমেন্ট (পিএইচডি)</p>	<ul style="list-style-type: none">➤ যৌন ও প্রজনন স্বাস্থ্য সেবা সম্পর্কে সচেতনতা বৃদ্ধি ও সেবা গ্রহণে উৎসাহিত করা➤ বাল্য বিবাহরোধ ও কিশোরীদের ২০ বছরের আগে সন্তান না নেবার জন্য সচেতনতা বৃদ্ধি➤ সচেতনতা বৃদ্ধি➤ কুসংস্কার দূর করা➤ সেবা গ্রহণে উৎসাহিত করা➤ সামাজিক গ্রহনযোগ্যতা বৃদ্ধি➤ কৈশোরবান্ধব ধারাবাহিক ও সম্পূর্ণ সেবা প্রদান➤ কিশোরী ও মায়েদের সেবাদান কর্নার স্থাপন➤ সার্বিকভাবে কৈশোরবান্ধব পরিবেশ তৈরি➤ কিশোরী ও মায়েদের সেবাদান কর্নার➤ কিশোর কিশোরীদের সাথে সরাসরি কার্যক্রম➤ স্কুলগামী কিশোর কিশোরীদের সাথে কার্যক্রম➤ বাড়ীভিত্তিক ও দলীয় সভা আয়োজন➤ মোবাইলের মাধ্যমে তথ্য সরবরাহ➤ কুইজ কম্পিটিশন ও স্কুল ভিত্তিক স্বাস্থ্য সেশন➤ পিয়ার গ্রুপ গঠন➤ মোবাইল ভিত্তিক কোর্স➤ এডোলোসেন্ট টক➤ সিজি মিটিং➤ ইউএইচএন্ডএফডব্লিউসি মিটিং➤ বিভিন্ন স্টেকহোল্ডার ও প্লাটফর্ম এর স্বমন্বয়➤ বিশেষ দিবসে সেবা কেন্দ্রে কুইজ আয়োজন➤ কিশোরী সমাবেশ➤ ইউনিয়ন ডিজিটাল সেন্টারে টেলি কাউন্সেলিং

PHD's Road map



BPHC

BPHC Public
NGO
Partnership
A Component of DFID's SHAPLA Programme



1988-1992 in support of 3rd Population project of the government:

- Beginning the journey as **ODA-NGO project** since the late 1988
- Managed 38 NGOs' grants for MCH/FP projects

1993- 1998 (4th Population project of the government:

- Acted as **Bangladesh Population and Health Consortium** of DFID (presently FCDO), CIDA, SIDA and Government of Netherlands
- Managed 56 NGOs' grants for ESP delivery projects

1999-2004 in support to HPSP and HNPSP of the government:

- Acted as **Public-NGO partnership project** of DFID/FCDO
- Managed 34 NGOs' grants for ESP, ARH, Safe Motherhood & HIV/AIDS projects

2005 onward:

- Transformed into a national organisation with non-profit and NGO registration
- Upholds institutional capabilities in the area of grant management, program implementation, technical assistance, capacity development, humanitarian response and midwifery education
- Builds partnerships and collaborations

Present coverage

Service Coverage

In 2 decades, reached 51 districts, currently 17 districts;

Reaching 6-8 million people annually;

Reaching 200,000 Pregnant and newborns annually approx.

Support Services to around 900 CCs, 250 FWCs and Sub Centers;

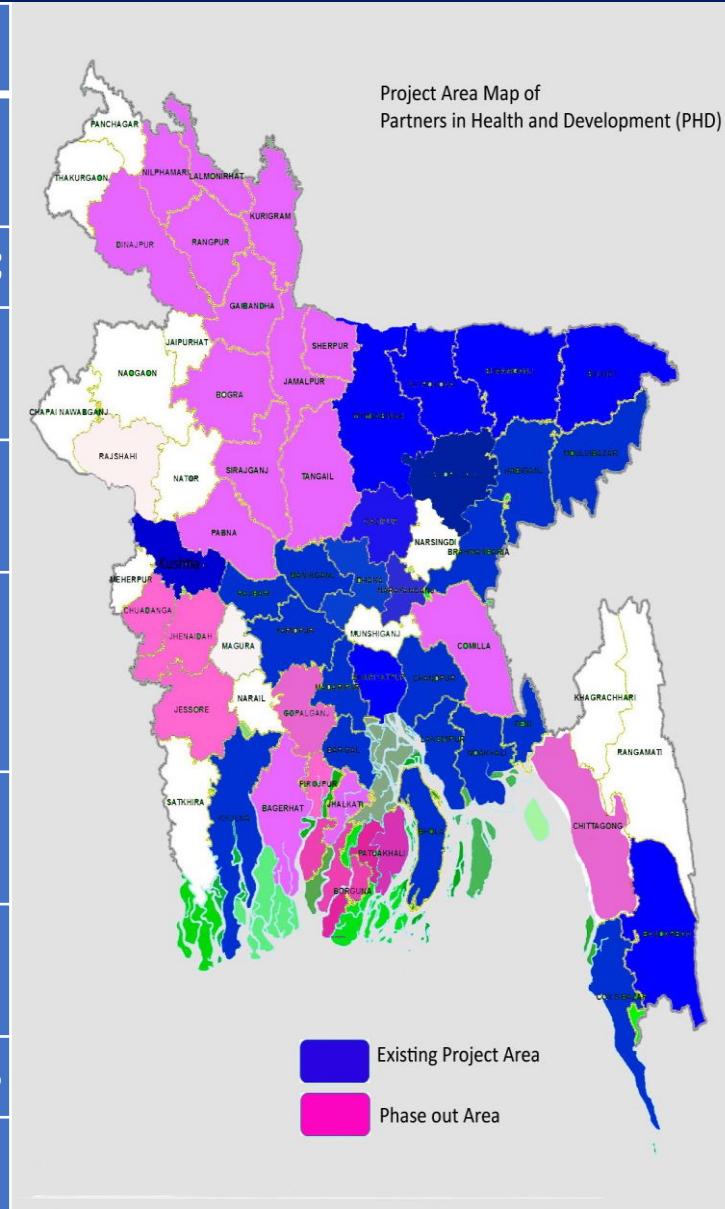
Training to 20,000 health personnel of national, int. and Govt. organizations

TA and CB support to at least 50 national and Int. organizations

Provided research/study in support to at least 20 organizations

Direct service delivery from 16 Clinics

Emergency services to 20 refugee camps out of 32



Programme Coverage

Maternal, new-born and child health

Sexual, reproductive & adolescent health and Family Planning

Nutrition programming including IYCF and ECD

Academic programme

Urban health

Climate change and health resilience

Test innovation in health programming

Emergency response including COVID response

Partners Associated with PHD

<u>National</u>	<u>International</u>	<u>UN Agencies</u>	<u>Donors</u>	<u>GOB/DGHS/DGFP</u>
BRAC	INTRAC	UNICEF	DFID/FCDO	CBHC, DGHS
OGSB	WaterAid	ILO	CIDA/GAC,	IMCI, DGHS
FPAB	Friendship	UNFPA	SIDA	NASP, DGHS
DORP	Pathfinder Int	WHO	EU	IPHN, DGHS
BEES	FHI 360	IOM	AusAid	Hospital DGHS
DSK	CPI	WB	USAID	DGFP
RIC	PCI			CCHPU, MOH&FW
VARD	OXFAM			NILG, LGED
BJKS	MSCS			KMCH
NM	USCCB			BNMC
BIRDEM	SCI			PKSF
BU/JPGPH	CU			MJF
SHED	ORBIS			CLP
CDL	CW			BSMMU
UDDOG	BFW			
GUP	HLSP			
CCDB	CARITAS			
SHEVA	ICDDR			
BWHC	B			
SRDS	Options			
US	Plan Int			
BACE	MDMj			
CWFD	WRC			
HASAB				
IEH				

PHD worked around 70 national, international NGOs, Donors and professional bodies in last 18 years

These organisations are either end-users of PHD services themselves or are third-party payers or lenders for services;

PHD's partnerships and programs

UNICEF

- Operating 6 Aalo Clinics under Model Urban PHC project since July 2022
- Delivering MNCAH and Nutrition Services for Rohingya Community through 2PHCs and 6 HPs since Sept 2017
- Strengthening MNCH & Nutrition Services for host community under World Bank's HGSP since Dec 2021
- IH&NHMYC project in 3 HTR districts (2014-2017)
- Nutrition Interventions for Rohingya and Host Community in Cox's (2020-2022)
- Joint GOB-UN MNH Initiatives in 3 districts (2009-2016)
- MNCS project in Bandarban (2008-2012)

UNFPA

- SRH & GBV Prevention and Response service in DHs, MCWC and UHCs of Noakhali since 2023
- Mobilizing Community-based MNSRH & ASRH in 23 camps & 5 unions of Ukhiya since July 2018
- Mobilizing community for demand creation in all Upazilas of Cox's under World Bank's HGSP since July 2021
- Assessed and planned health care and financing options for health facilities in and around the camps and settlements in 2 Upazilas of Cox's (Oct-Dec, 2017)

Save the Children

- Leading the thematic area of LG&A as Consortium Partner of USAID's MaMoni MNCSP in 17 Districts since Aug 2018
- Operating 2 HPs under DFAT funded MNCAH&N Services since Jan 2021
- Strengthening resilience and social cohesion (BMZ) in Cox's since Dec 2022
- MaMoni MNCSP Covid 19 Response project in Munshiganj and Madaripur (2021-2022)
- USAID/OFDA funded Integrated response to COVID-19 crisis in Cox's in 2020
- Acted as Implementing Partner in USAID's MaMoni HSS (2014-2018) and USAID's ICHW (2016-2020)
- Acted as Capacity Building Service Provider for SCI (2002-2013)

Plan International

- Implementing Lifting Healthy, Empowered and Protected Girls and Women project in 2 Upazilas of Cox's Since June 2022

Pathfinder International

- Implementing Shukhi Jibon project in 2 Districts since May 2021
- Implementing Women-led Climate Resilience in Gaibandha since July 2022

Concern Worldwide

- Implementing Midwifery-led Health Service in Bhola since April 2022
- Acted as Implementing Partner for FCDO funded Essential Healthcare Service for Disadvantaged in 3 Districts (2019-2021)

Option UK

- Acted as Implementing Partner for FCDO funded Urban Health Systems Strengthening Project (UHSSP) in 3 Municipal Corporations (2015-2018)

Maxwell Stamp Plc.

- Delivered TA for inclusion of PHC, FP and Nutrition components in FCDO funded Chars Livelihood Project (CLP) in 8 districts (2012-2016)

FHI 360

- Acted as Implementing Partner for USAID's Strengthening Multi-Sectoral Nutrition Programming through Implementation Science Activity in 70 selected unions of 22 selected Upazilas of 6 districts (2018-2020)

Operating PHD's Institute of Nursing and Midwifery in Khulna from Jan 2022 after completion of FCDO funded Diploma on Midwifery Education in collaboration with BRAC University (2012-2021)

National Collaboration

Government Actors	Types of Tested Innovations
Community Based Health Care (CBHC), DGHS	<ul style="list-style-type: none"> • MoUs signed to support at total of 1,377 CCs in 7 districts • National adaptation of CHW strategies, definition and harmonized job description • Accredited CG based cMP approach for national scale-up
National Institute of Local Government (NILG), LGD	<ul style="list-style-type: none"> • Letter of Commitment (LoC) signed to incorporate a session on 'Roles and responsibilities of Union Parishads in improving MNCH services for their respective constituents' in the printed URT manuals and UP handbooks
IPHN, DGHS	<ul style="list-style-type: none"> • Designed a tailor-made Training Module on Nutrition • Organized Master ToT to develop a national trainers pool • Dedicated a resource person to support IPHN in their regular training program
NNHP and IMCI Program, DGHS	<ul style="list-style-type: none"> • National scale up of the application of 7.1% Chx. solution for Umbilical Cord Care : Oriented 20,856 GoB providers in 129 Upazilas of 15 selected districts • Revisit of Specific New-born Interventions : Covered 242 Upazilas of 28 Districts, assessed 2043 facilities, refreshed 8,933 GoB, trained 1327 Nurses/Midwives
National AIDs and STD Program (NASP), DGHS	<ul style="list-style-type: none"> • Assessed competency gaps and designed training modules • Trained hundreds of program managers and two thousands of peer educators
Hospital Division, DGHS	<ul style="list-style-type: none"> • Accountability mechanism in District Hospitals and UHCs – Promote Community Support Committees, Citizen Chartered, Help Desk, Client Feedback through Suggestion Boxes
DGFP	<ul style="list-style-type: none"> • National scale-up on UH&FWC assessment • Active member of monitoring cell in DGFP • 24/7 NVD services in selected UH&FWCs by deploying Midwives

Capacity Building Interventions under the leadership of **IMCI Section, DGHS** with the support of **UNICEF Bangladesh**

1. **CCM Training** implemented in **20** Districts

- ToT & basic training for **120 GoB Doctors** and **6,750 BHWs** (HA, FWA & CHCP)

3. **ToT on C-IMCI Counseling** implemented in **12** Districts

- ToT for **421 BHWs** to develop their C-IMCI Counseling skills

2. **ToT Training on five categories** implemented in **10** Districts

- TOT on **KABPA** for 252 BHWs
- TOT on **MNCS Word Committee Formation, Operation and LLP** for 227 BHWs
- TOT on **activating UH&FPC** for 220 BHWs
- TOT on **roles of opinion leaders** in behavioral change for 297 BHWs
- TOT on **Village Doctors' Training** for 277 BHWs

National Scale-up & Revisit of Specific New-born Interventions

A collaboration with Save the Children

Coverage- **28 districts** in four phases with 34000 participants

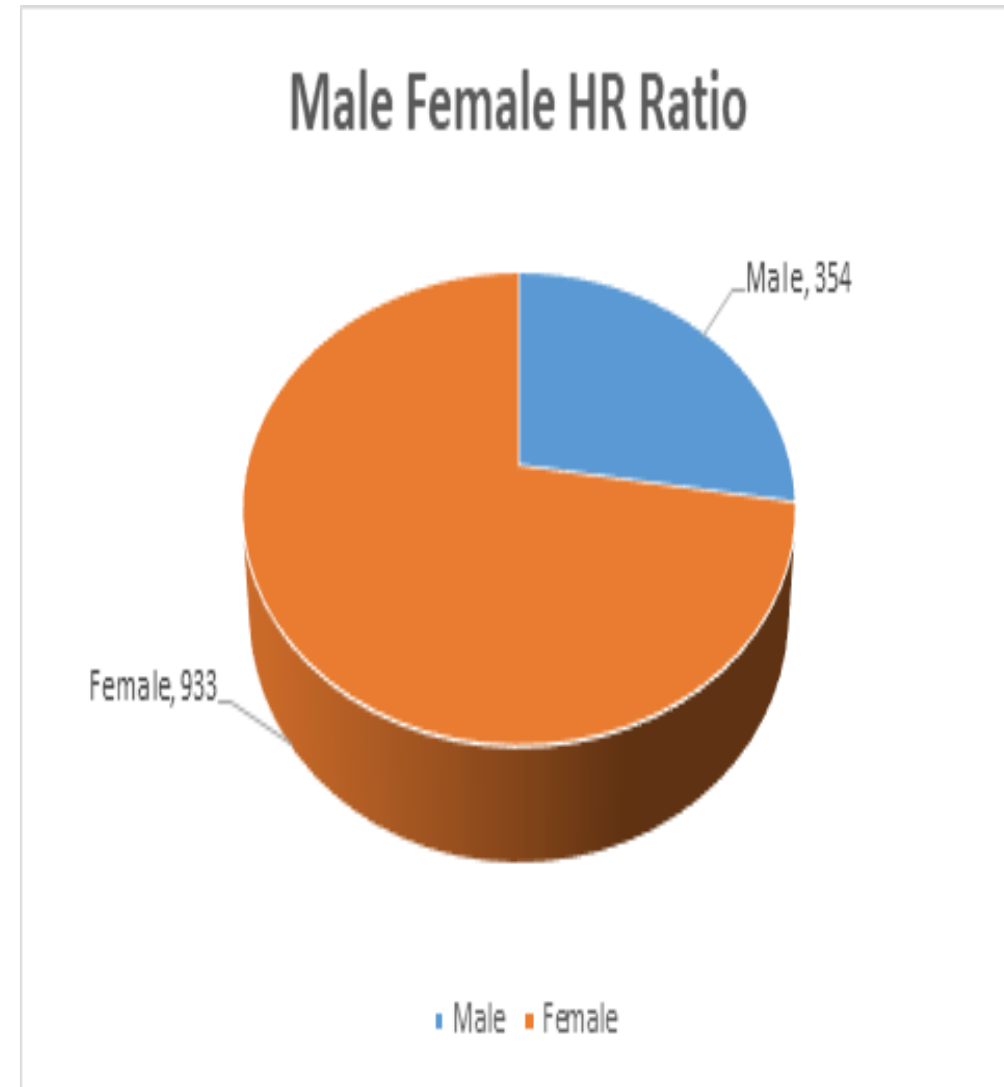
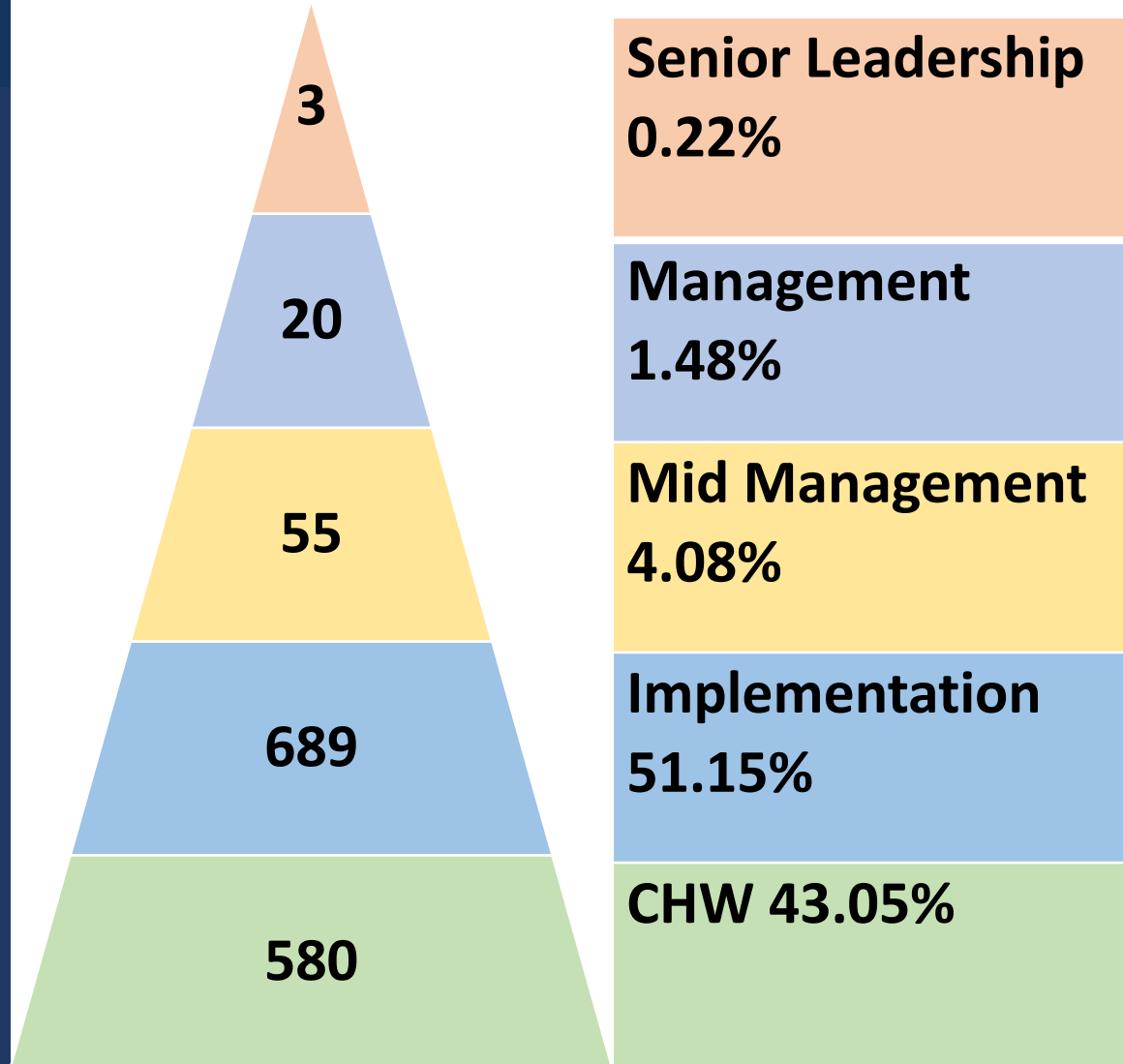
Duration- **October 2016 to March 2018**

- Besides PHD conducted different training interventions like Micro-planning, Supportive Supervision, Basic Facilitation Skill, Community Mobilisation, UP, Upazila Parisad orientation workshop, etc.

Key researches & studies in recent past

Agencies	Researches or studies
WHO	<ul style="list-style-type: none"> • Assessment of Healthy Workplace Initiatives in Bangladesh (2023) • Mapping the policy and programmatic uptake and implementation status of MNCAH (2022) • Rapid assessment of national preparedness for implementing Nurturing Care for ECD (2019) • Technical support through Local Experts for finalization of Polio Transition Plan and Health System Strengthening/Programme Support Rationale (2018) • Technical support through Local Experts for finalization of Comprehensive Multiyear Immunization Plan of Action and Review for Update of TOR for NCIP (2018) • Technical Support For Documentation Of Country Success In Polio Eradication (2018) • Baseline assessment of Blood Collection and Demand System of District Health System (2018)
SCI	<ul style="list-style-type: none"> • Baseline Survey of Urban Sponsorship Program
INTRAC, UK	<ul style="list-style-type: none"> • Organizational assessment (Baseline) of 5 Bangladeshi NGOs under an independent evaluation of the MFS II Grant Framework of the Dutch Ministry of Foreign Affairs • Interim review of progresses of 5 Bangladeshi NGOs on the basis of baseline findings • Repeat capability assessment of 5 Bangladeshi NGOs
Leprosy Mission Int.	<ul style="list-style-type: none"> • Situation Analysis- A background document for developing Country Strategy (2016-2020) of The Leprosy Mission International Bangladesh (TLMIB)
ILO	<ul style="list-style-type: none"> • Rapid Assessment in 5 Cities under Urban Informal Economy Project
UNICEF	<ul style="list-style-type: none"> • Functional Competency Needs and Gaps Assessment for HIV/AIDS Targeted Interventions

PHD-Present Human Resources





Thank you